



Flight Plan & Site Survey

Created using **RPAS Wilco®**

Operation Name:	COGG - West Field
Pilot Name:	██████████
Pilot Certificate:	██████████
Flight Start:	April 8, 2023 1:38 PM
Flight End:	April 8, 2023 3:38 PM
Flight Area (Latitude):	44° 6' 35.60" N (44.11)
Flight Area (Longitude):	79° 45' 13.40" W (-79.754)
Altitude - Radius:	Alt: 700 ft - Rad: 926.0 m (0.5 nm)
Airspace:	UNCONTROLLED
FIR - Contact:	CZYZ - 905-676-4509

Please ensure you received all required authorizations prior to flight.

Disclaimer

This Site Survey was created using RPAS Wilco by AIM Robotics. The flight plan contained is intended only for RPAS flights on the date/time and location specified. The user accepts all responsibility for the accuracy and completeness of the information contained.

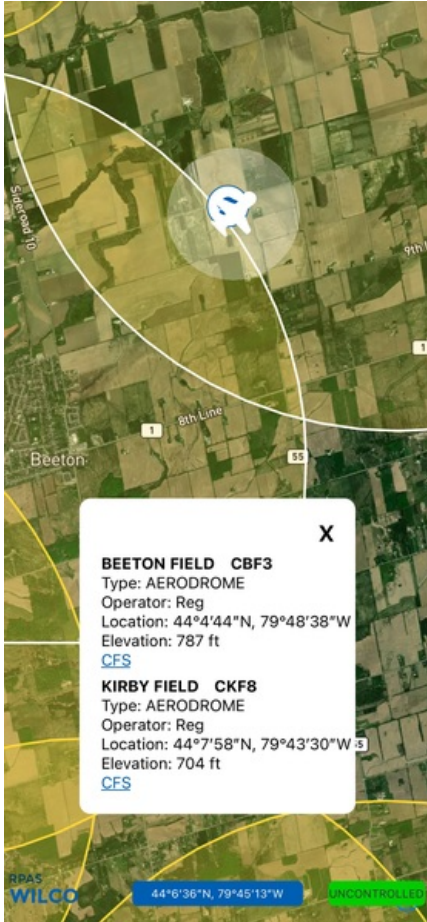
For the complete Terms & Conditions, see

<https://rpswilco.com/#/tnc>



Included

- Site Survey
- Obstacles (if available)
- Nearby Aerodromes
- Canadian Aviation Regulations
- GFA
- Aerodrome Supplements
 - METAR & TAF (if available)
 - NOTAMS
 - CFS

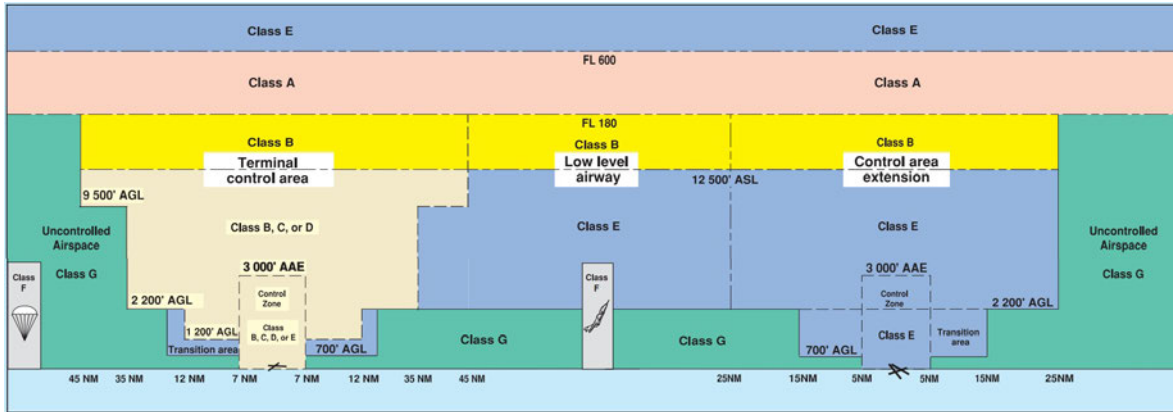
Flight Map



MAP Details

	Latitude	Longitude
 MODEL	44° 6' 35.60" N (44.11)	79° 45' 13.40" W (-79.754)
 Pilot	44° 6' 39.20" N (44.1109)	79° 45' 17.00" W (-79.7547)

Airspace Classification



Overlying Airspaces

Class	Name	Floor	Ceiling
E	T614 Airway	2200AGL	12500MSL
B	T614 Airway	12500MSL	18000MSL
E	T723 Airway	2200AGL	12500MSL
B	T723 Airway	12500MSL	18000MSL
E	T616 Airway	2200AGL	12500MSL
B	T616 Airway	12500MSL	18000MSL
B	Southern Ontario Low Level Control Area CAE	12500MSL	18000MSL
E	Southern Ontario Low Level Control Area CAE	2500MSL	6500MSL
E	Southern Ontario Low Level Control Area CAE	6500MSL	12500MSL
E	Toronto XPNDR MANDTRY	6500MSL	12500MSL

Nearest Aerodromes & Distance from Operation

KIRBY FIELD (CKF8 AERODROME Reg)	Lat: 44.133	Long: 79.725	3.444 KM	1.86 NM
BEETON FIELD (CBF3 AERODROME Reg)	Lat: 44.079	Long: 79.811	5.72 KM	3.09 NM
ALLISTON (CPJ2 HELIPORT Reg)	Lat: 44.148	Long: 79.801	5.674 KM	3.06 NM
ALLISTON (CNY4 AERODROME Reg)	Lat: 44.183	Long: 79.833	10.301 KM	5.56 NM

Canadian Aviation Regulations

Division III — General Operating and Flight Rules

For full listing please visit <https://laws-lois.justice.gc.ca/eng/regulations/SOR-96-433/FullText.html#s-901.27>

Visual Line-of-sight

- **901.11 (1)** Subject to subsection (2) no pilot shall operate a remotely piloted aircraft system unless the pilot or a visual observer has the aircraft in visual line-of-sight at all times during flight.
- **(2)** A pilot may operate a remotely piloted aircraft system without the pilot or a visual observer having the aircraft in visual line-of-sight if the operation is conducted in accordance with a special flight operations certificate — RPAS issued under section 903.03.

Procedures

- **901.23 (1)** No pilot shall operate a remotely piloted aircraft system unless the following procedures are established:
 - **(a)** normal operating procedures, including pre-flight, take-off, launch, approach, landing and recovery procedures; and
 - **(b)** emergency procedures, including with respect to
 - **(i)** a control station failure,
 - **(ii)** an equipment failure,
 - **(iii)** a failure of the remotely piloted aircraft,
 - **(iv)** a loss of the command and control link,
 - **(v)** a fly-away, and
 - **(vi)** flight termination.
- **(2)** If the manufacturer of the remotely piloted aircraft system provides instructions with respect to the topics referred to in paragraphs (1)(a) and (b), the procedures established under subsection (1) shall reflect those instructions.
- **(3)** No pilot shall conduct the take-off or launch of a remotely piloted aircraft unless the procedures referred to in subsection (1) are reviewed before the flight by, and are immediately available to, each crew member.
- **(4)** No pilot shall operate a remotely piloted aircraft system unless the operation is conducted in accordance with the procedures referred to in subsection (1).

Site Survey

901.27 No pilot shall operate a remotely piloted aircraft system unless, before commencing operations, they determine that the site for take-off, launch, landing or recovery is suitable for the proposed operation by conducting a site survey that takes into account the following factors:

- **(a)** the boundaries of the area of operation;
- **(b)** the type of airspace and the applicable regulatory requirements;
- **(c)** the altitudes and routes to be used on the approach to and departure from the area of operation;
- **(d)** the proximity of manned aircraft operations;
- **(e)** the proximity of aerodromes, airports and heliports;
- **(f)** the location and height of obstacles, including wires, masts, buildings, cell phone towers and wind turbines;
- **(g)** the predominant weather and environmental conditions for the area of operation; and
- **(h)** the horizontal distances from persons not involved in the operation.

Operations at or in the Vicinity of an Aerodrome, Airport or Heliport

- **901.47 (1)** No pilot shall operate a remotely piloted aircraft at or near an aerodrome that is listed in the *Canada Flight Supplement* or the *Water Aerodrome Supplement* in a manner that could interfere with an aircraft operating in the established traffic pattern.
- **(2)** Subject to section 901.73 no pilot shall operate a remotely piloted aircraft at a distance of less than
 - **(a)** three nautical miles from the centre of an airport; and
 - **(b)** one nautical mile from the centre of a heliport.
- **(3)** No pilot shall operate a remotely piloted aircraft at a distance of less than three nautical miles from the centre of an aerodrome operated under the authority of the Minister of National Defence unless the operation is conducted in accordance with a special flight operations certificate — RPAS issued under section 903.03.

Records

- **901.48 (1)** Every owner of a remotely piloted aircraft system shall keep the following records:
 - **(a)** a record containing the names of the pilots and other crew members who are involved in each flight and, in respect of the system, the time of each flight or series of flights and
 - **(b)** a record containing the particulars of any mandatory action and any other maintenance action, modification or repair performed on the system, including
 - **(i)** the names of the persons who performed them,
 - **(ii)** the dates they were undertaken,
 - **(iii)** in the case of a modification, the manufacturer, model and a description of the part or equipment installed to modify the system, and
 - **(iv)** if applicable any instructions provided to complete the work.
- **(2)** Every owner of a remotely piloted aircraft system shall ensure that the records referred to in subsection (1) are made available to the Minister on request and are retained for a period of
 - **(a)** in the case of the records referred to in paragraph (1)(a), 12 months after the day on which they are created; and
 - **(b)** in the case of the records referred to in paragraph (1)(b), 24 months after the day on which they are created.
- **(3)** Every owner of a remotely piloted aircraft system who transfers ownership of the system to another person shall, at the time of transfer, also deliver to that person all of the records referred to in paragraph (1)(b).

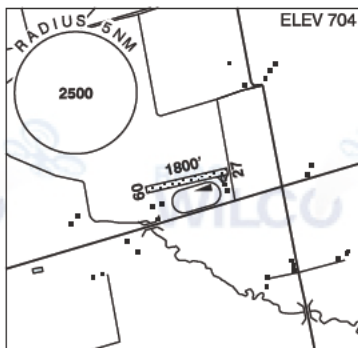
ONTARIO

AERODROME/FACILITY DIRECTORY

COOKSTOWN / KIRBY FIELD ON

CKF8

REF	N44 07 58 W79 43 30 3.2SSW 11°W UTC-5(4) Elev 704' VTA A5000
OPR	G. Kirby 905-729-0747 Reg PPR
PF	C-1 D-3,5,6
FLT PLN	
FIC	London 866-WXBRIEF (Toll free within Canada) or 866-541-4104 (Toll free within Canada & USA)
RWY DATA	Rwy 09(088°)/27(268°) 1800x75 GRASS
RCR	Opr No win maint. Rwy may be soft when wet.
COMM	
ATF	tfc 123.2 5NM 3500 ASL
CAUTION	Unlgt'd twr 900 ASL 1NM E



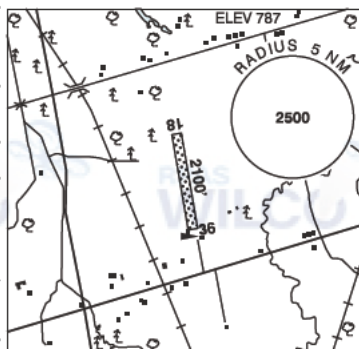
ONTARIO

AERODROME/FACILITY DIRECTORY

BEETON FIELD ON

CBF3

REF	N44 04 45 W79 48 38 1.1W 10°W (2020) UTC-5(4) Elev 787' VTA A5000
OPR	Terry Cleland 416-999-4037 Reg PPR
PF	C-1,2,3,4,5
FLT PLN	
FIC	London 866-WXBRIEF (Toll free within Canada) or 866-541-4104 (Toll free within Canada & USA)
RWY DATA	Rwy 18/36 2100x100 GRASS
RCR	Opr No win maint
COMM	
ATF	tfc 123.2 5NM 3800 ASL



ONTARIO

AERODROME/FACILITY DIRECTORY

ALLISTON ON (Heli)

CPJ2

REF	N44 08 54 W79 48 03 2 3E 10°W UTC-5(4) Elev 760' VTA A5000	
OPR	Helitrades Inc. 705-435-4031/4468 Reg PPR	
PF	B-1 C-2,3,4,5,6	
FLT PLN	FIC London 866-WXBRIEF (Toll free within Canada) or 866-541-4104 (Toll free within Canada & USA)	
HELI DATA	FATO 200' x 200' GRASS TLOF 33'X19 CONC Max heli overall length 100'	
RCR	Opr	
COMM	ATF tfc 123.2 5NM 3800 ASL excluding area within Borden 5NM MF area	
PRO	Arr/dep 180° & 360° fr heli. Alliston A/D 2.6NM NW.	
CAUTION	Hydro pole 30 AGL aprx 41' S of TLOF.	

ONTARIO

AERODROME/FACILITY DIRECTORY

ALLISTON ON

CNY4

REF	N44 11 W79 50 1.3NE 10°W UTC-5(4) Elev 720' VTA A5000
OPR	Bob Mackenzie 705-434-8600 Reg PN
PF	B-1 C-2,3,4,5,6
FLT PLN	FIC London 866-WXBRIEF (Toll free within Canada) or 866-541-4104 (Toll free within Canada & USA)
SERVICES	S 4,5
RWY DATA	Rwy 18/36 2300x50 GRASS/SNOW Thld 18 displ 200' & Thld 36 displ 200' RCR Opr Rwy may be soft in spring.
LIGHTING	18-(LO), 36-(LO) O/R 1900' only PPR Opr
COMM	ATF tfc 123.2 5NM 3700 ASL excluding area within Borden 5NM MF area
CAUTION	Marked P-lines 45 AGL aprx 1000' fr Thld 18. Ditch aprx 6' deep at hld Rwy 18. Trees 30 AGL either side Thld 18, 100' fr rwy centreline. Bldg 40 AGL on apch Rwy 36 aprx 1400' fr Thld 36.

